



# Alderman Bolton Newsletter

## Alderman Bolton Lottery



**WE'VE LAUNCHED A LOTTERY**

**Buy Your Tickets Today To Help Our School**

- Alderman Bolton Primary school has launched a lottery!
- Tickets cost just £1 per ticket, per week and 40% of all ticket sales are donated to our school.
- A **GUARANTEED** cash prize to someone on our supporter list every week.
- A further chance of winning £25,000 in a separate draw **EVERY WEEK!**
- Draws are every Saturday at 8pm and results are posted online.

To start supporting, Visit:  
[www.yourschoollottery.co.uk/play](http://www.yourschoollottery.co.uk/play)

And Search For:  
**Alderman Bolton Primary school**

Supporters must be 16 years of age or older.



## Change to holiday dates 2020/2021...

Please note that we have had to amend our summer half term holiday dates for the academic year 2020/2021. This is to fall in line with the Department of Education assessment dates.

The original holiday was due to commence on 31<sup>st</sup> May – 10<sup>th</sup> June 2021. This has now changed and will commence on 24<sup>th</sup> May – 4<sup>th</sup> June 2021.

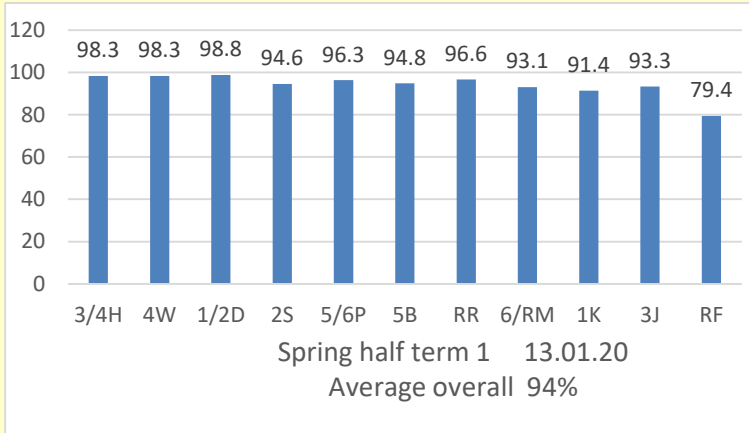
## Year 2 Swimming...

Year 2 have loved their swimming lessons for the last two weeks. They have been fantastic representatives of the school and are doing really well in the pool.

Swimming for Year 2 is every Friday for a further 8 weeks.

Please continue to send swimming kits in a named bag. Please ensure earrings are removed, and if they cannot be removed, the swimming instructors have advised wearing a swimming cap for lessons.

# Attendance



**Congratulations to 1/2D who were the highest attending class last week with 98.8% attendance! The overall attendance was 94% which is below the national average.**

# After School Clubs

Monday	KS2 STEM
Monday	KS2 Gardening
Tuesday	KS2 Basketball
Tuesday	KS2 Keep Active & Maypole
Tuesday	KS1 Vocabulary Rock Stars
Tuesday	KS1 Phonics
Wednesday	KS1 Multi Skills
Thursday	KS2 Multi Skills
Thursday	Rec & KS1 Yoga
Thursday	KS2 ABPerformers



## ParentPay

Can you please ensure that you keep checking your balance on ParentPay and top up for dinner / snack as soon as it becomes zero. If you have a debit balance your son/daughter will have to bring in their own snack or packed lunch until a credit balance has been put on the account.

