



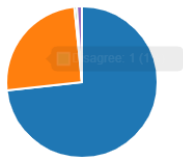
Alderman Bolton Newsletter

Parent Survey Responses

1. My child is happy at this school

[More Details](#)

Strongly agree	137
Agree	47
Disagree	1
Strongly disagree	0
Don't know	2



4. There is a good standard of behaviour at this school

[More Details](#)

Strongly agree	121
Agree	52
Disagree	4
Strongly disagree	0
Don't know	10



2. My child feels safe at this school

[More Details](#)

Strongly agree	150
Agree	35
Disagree	1
Strongly disagree	1
Don't know	0



5. The school deals with any cases of bullying effectively

[More Details](#)

Strongly agree	110
Agree	61
Disagree	2
Strongly disagree	1
Don't know	13



3. The arrangements for my child to settle in when they first started school were good

[More Details](#)

Strongly agree	134
Agree	51
Disagree	0
Strongly disagree	0
Don't know	0



6. The school has dealt with incidents involving my child appropriately

[More Details](#)

Strongly agree	122
Agree	52
Disagree	4
Strongly disagree	0
Don't know	9



7. My child is encouraged to take responsibility for his/her actions and achievements

[More Details](#)

Strongly agree	146
Agree	41
Disagree	0
Strongly disagree	0
Don't know	0



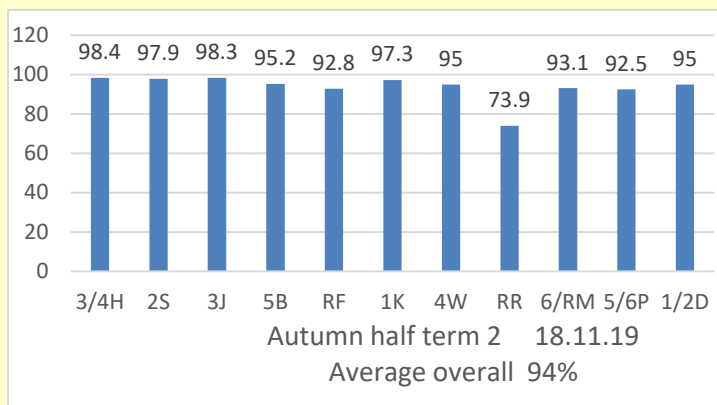
Remembering

Sadly, Mrs. Howe, one of our parents, has passed away after an illness. We would like to express our deepest sympathies to her family and friends and let them know that we are thinking of them at this time. We will be organising a collection in the near future with all proceeds being donated to St Rocco's. Thank you for your support.

Christingle

On Wednesday 4th December we will be holding our Christingle Service. As always parents and carers are welcome to join us at Christ Church on Wash Lane at 1.30PM. If you would like to make a donation to the church this can be popped in an envelope and sent to school with your child on Wednesday.

Attendance



Congratulations to 3/4H who were the highest attending class last week with 98.4% attendance! The overall attendance was 94% which is below the national average.

Dates for your diary...

Wednesday 4 th Dec	Christingle Service @ 1.30PM
Friday 6 th Dec	Year 3 and 4 Keyboard Assembly @ 11.30AM
Friday 6 th Dec	Reception Christmas Fayre @ 1.30PM
Friday 6 th Dec	KS1 and KS2 Christmas Fayre @2PM
Tuesday 10 th Dec	PTA Christmas Bingo Doors @ 5.45PM Start @ 6.00PM
Monday 16 th	ABC and Nursery Sing-A-Long/Party Morning @ 11AM and 2.30PM
Monday 16 ^h Dec Tuesday 17 th Dec	KS1 Nativity @ 2PM KS1 Nativity @ 9.30AM
Tuesday 17 th Dec Wednesday 18 th Dec	Reception Sing-A-Long @2.30PM Reception Sing-A-Long @9.30AM
Wednesday 18 th Dec	Sponsored ELF Run in aid of St. Rocco's Hospice.
Thursday 19 th Dec	School closes for Christmas Holidays @ 2PM

After School Clubs

Wednesday	KS1 Multi Skills
Thursday	KS2 Multi Skills
Monday	KS2 Gardening Club
Tuesday	KS2 Keep Active & Maypole
Tuesday	KS2 Athletics Club
Thursday	Rec & KS1 Yoga Club
Thursday	KS2 ABPerformers

ParentPay



Can you please ensure that you keep checking your balance on ParentPay and top up for dinner / snack as soon as it becomes zero. If you have a debit balance your son/daughter will have to bring in their own snack or packed lunch until a credit balance has been put on the account.